

## Lighting Proposal Memo

### Yale Sculpture Building

New Haven, CT

---



Kha N. Dang

## **Lighting Proposal Memo**

Prepared for: Dr. Richard Mistrick  
CC: Ted Dannerth  
Date: October 1, 2006

### **Executive Summary**

The following is a proposal for the four spaces that I am planning to redesign for my lighting | electrical thesis.

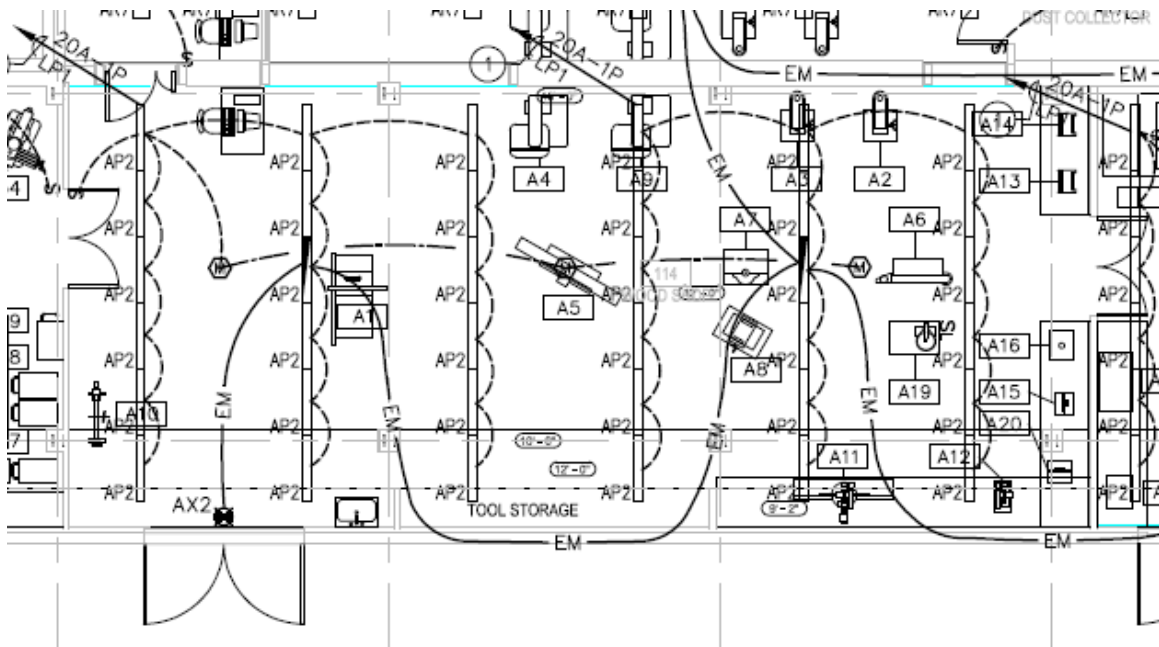
The four spaces are as follows:

Teaching Lab and Workshop  
Studio Space, Jury Area, and Graduate Space  
Gallery and Connection Tunnel  
Building Façade and Landscape

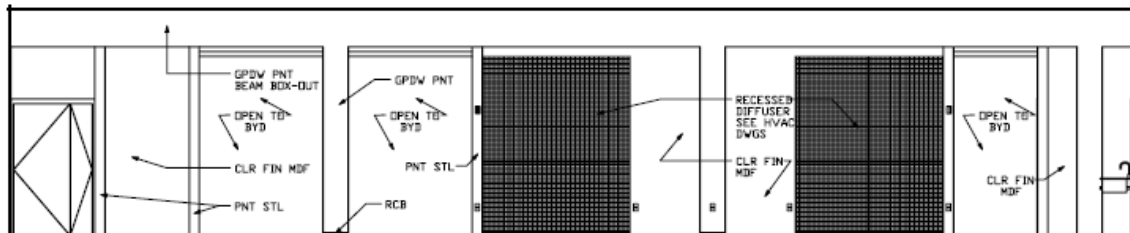
**Space 1 – Teaching lab and Workshop (woodshop)**

**Plans**

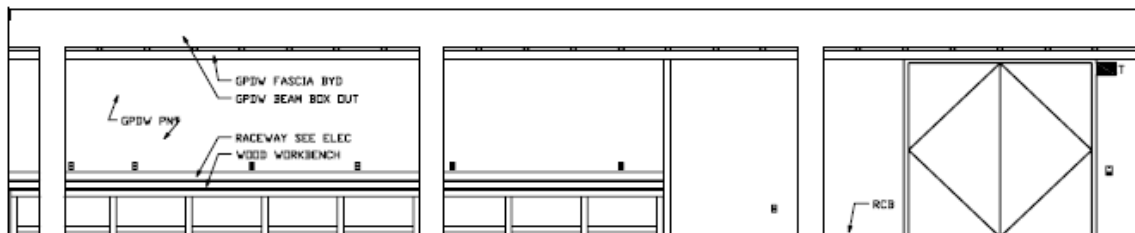
Lighting Plan



North Interior Elevation

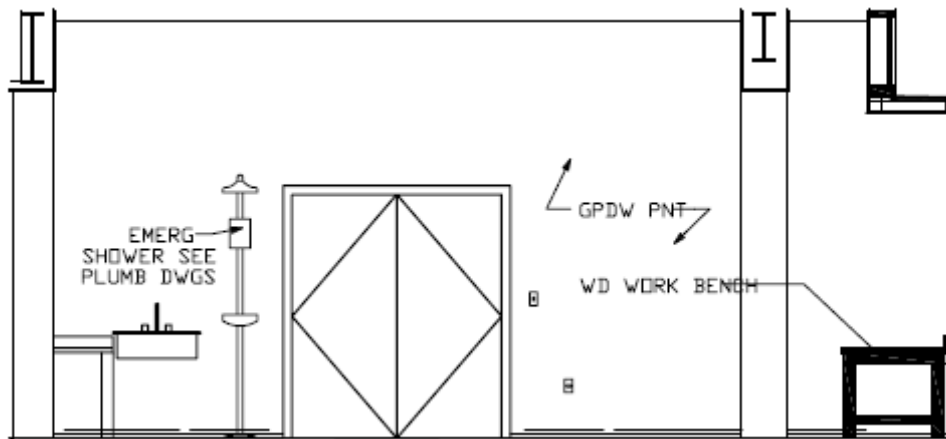


South Interior Elevation

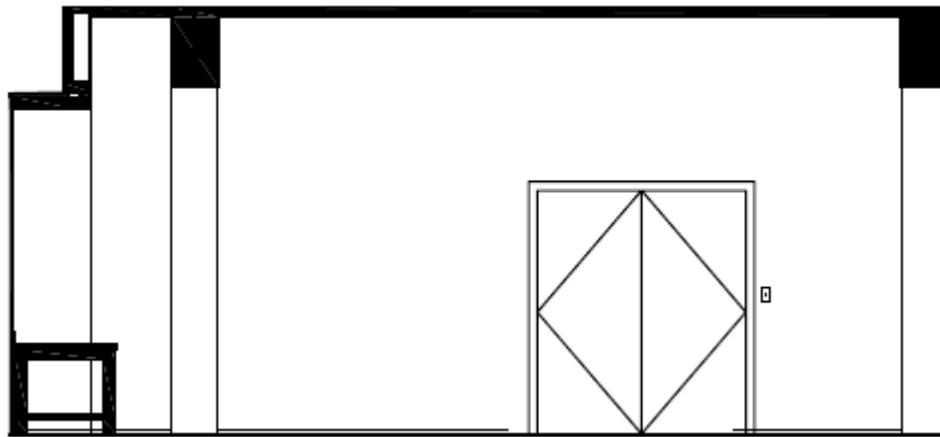


Kha N. Dang

East Interior Elevation



West Interior Elevation



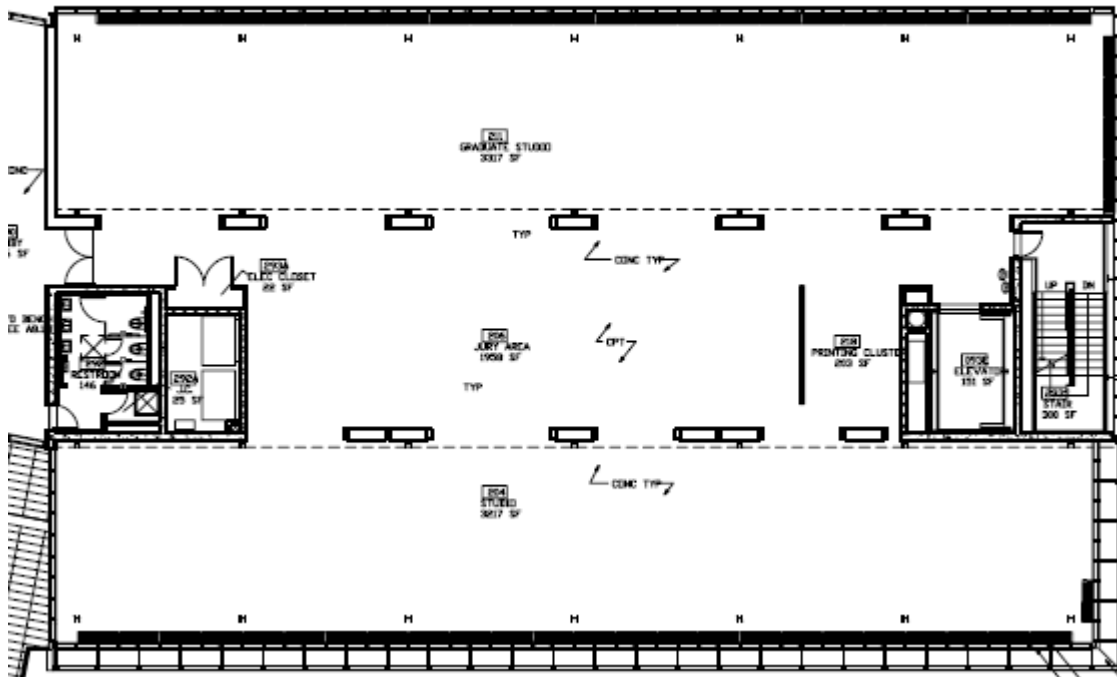
### Summary

The Teaching Lab and Workshop are located on the first floor of the Sculpture Building. The space is approximately 2940 sf. This area is used for teaching and working space for students. The lighting will be challenging because of the relative large space, different occupy uses and the need of quality light for sculpting.

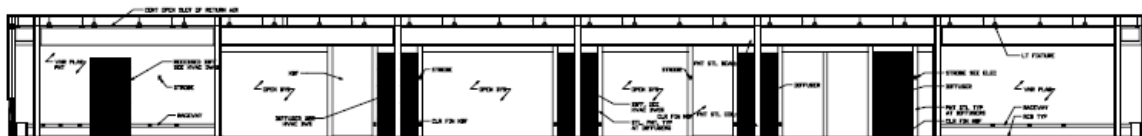
**Space 2 – Studio Space, Jury Area and Graduate Space**

**Plans**

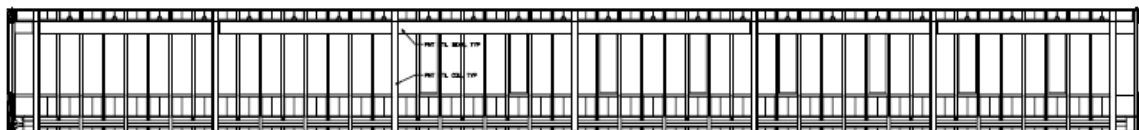
Lighting Plans



North Interior Elevation



South Interior Elevation

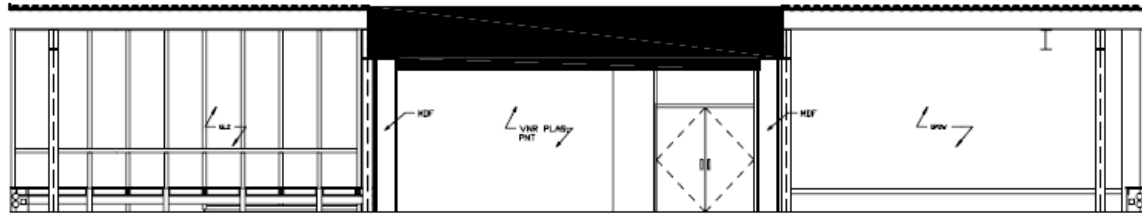


Kha N. Dang

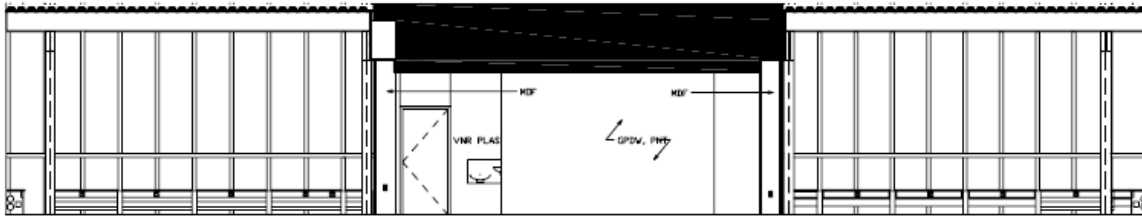
# Yale Sculpture Building

New Haven, CT

## West Interior Elevation



## East Interior Elevation



## Summary

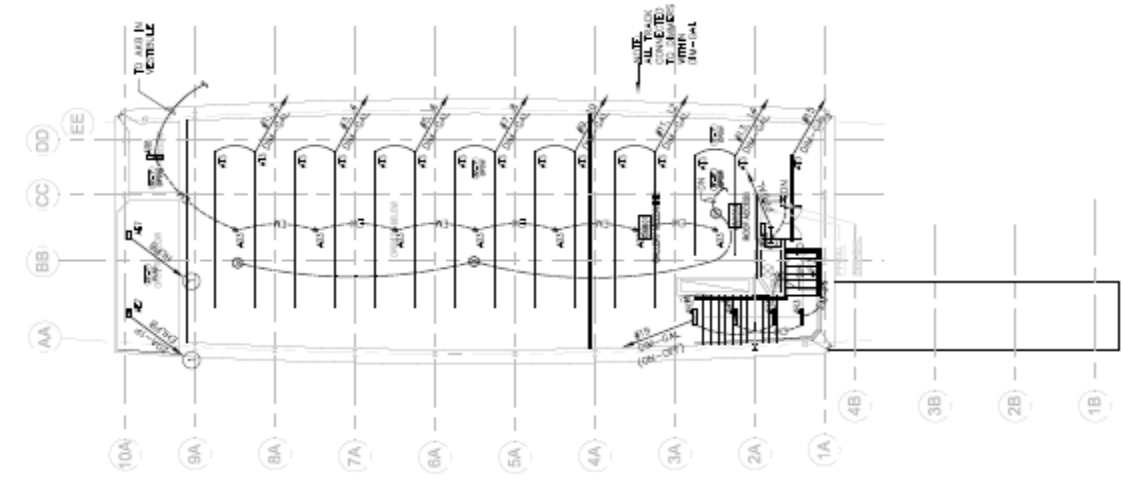
These spaces are located on the entire second floor of the Sculpture Building. Although these spaces are labeled into 3 categories, they are configured into one open floor plan. The approximate size of the space is 8400 sf. The third and fourth floors of this building have the same plan as the second floor.

Kha N. Dang

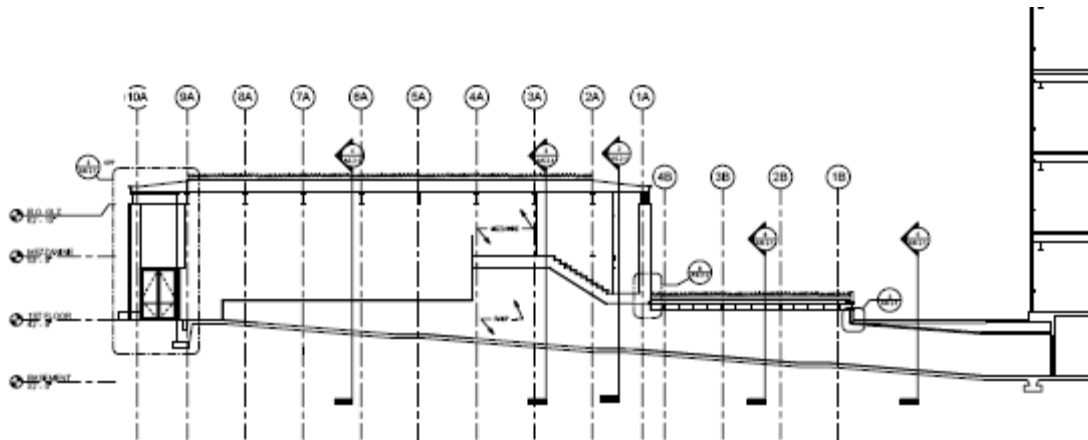
**Space 3 – Gallery**

**Plans**

Lighting Plan



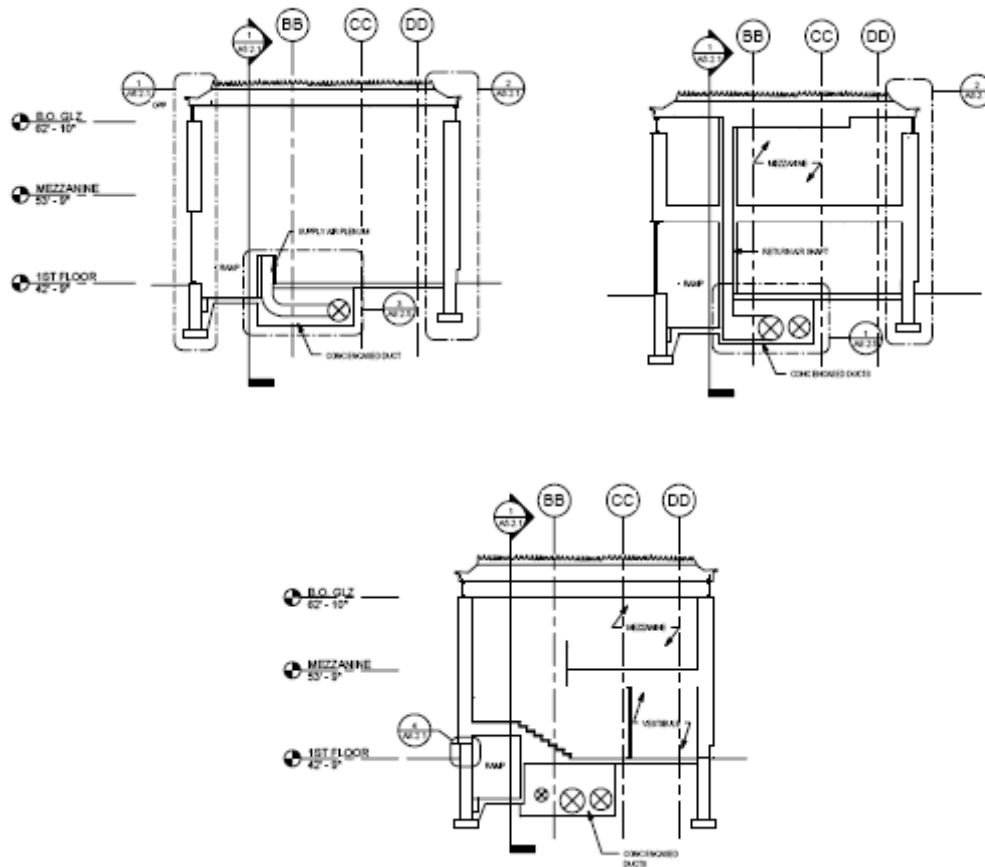
Sections



Kha N. Dang

# Yale Sculpture Building

New Haven, CT



## Summary

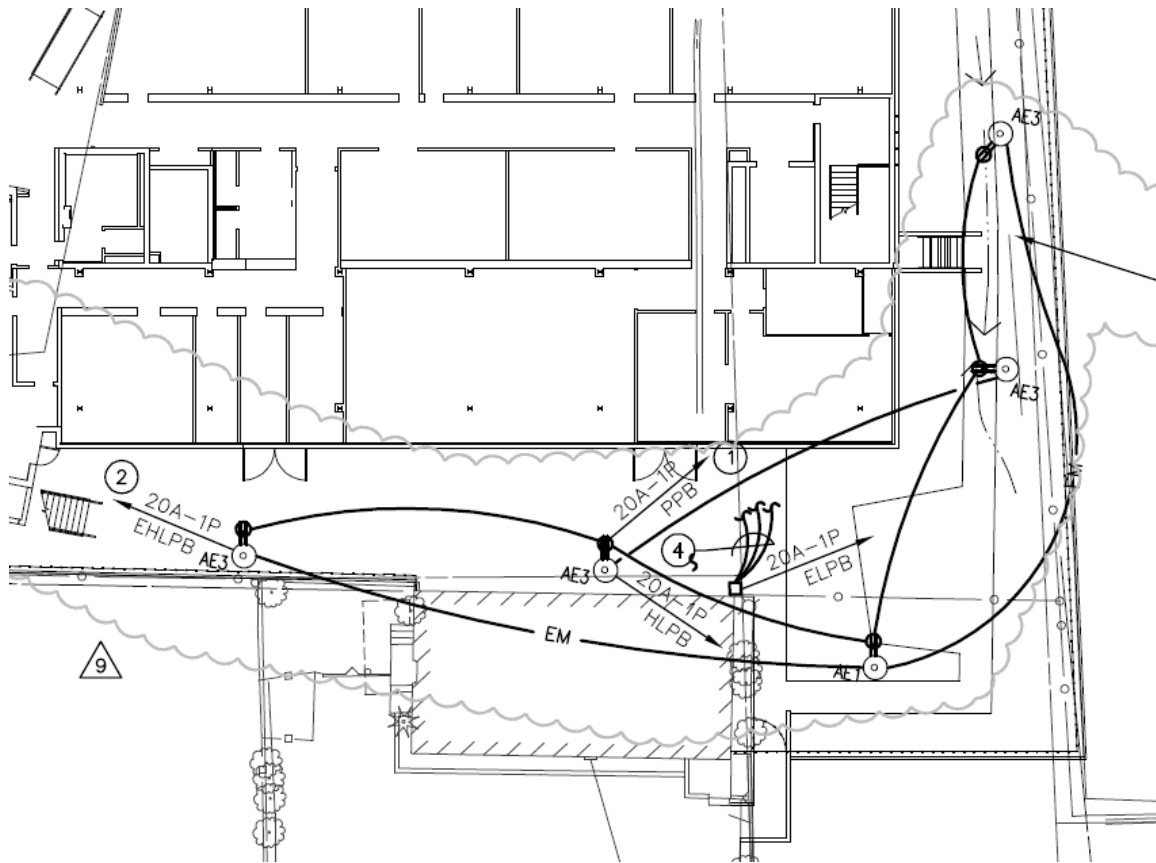
The Gallery is contained into one separate section from the Sculpture Building. It is connected to the main building by a under ground tunnel. The approximate area of the Gallery is 2663.67 sf and it is a double height space. The buildings' perimeter is made up of two arcs that span the length of the building. The Gallery's function is to showcase students' works. The Connection tunnel is 36.3' by 9' and runs underground to the Sculpture Building.

Kha N. Dang

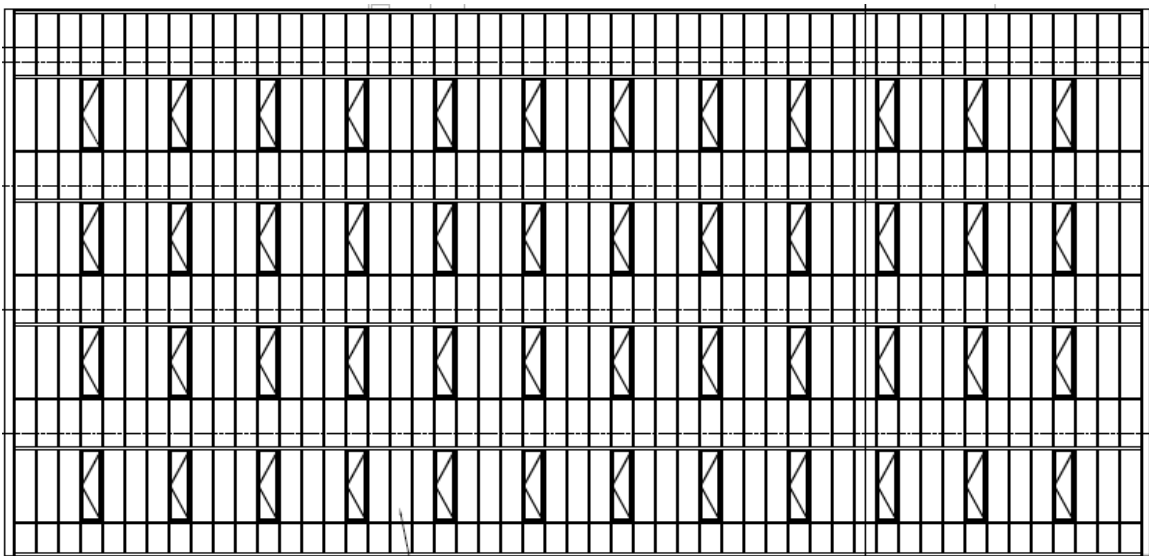


Space 4: Exterior Façade

Plans



Elevation



Kha N. Dang

## Yale Sculpture Building

---

New Haven, CT

### **Summary**

The Sculpture Building's façade is made up of metal louvers in a grid formation. The Gallery has a glass façade.

END OF SECTION

**Kha N. Dang**

---

Architectural Engineering – Lighting | Electrical Option  
<http://www.arche.psu.edu/thesis/eportfolio/2007/portfolios/KND107>